

# RENUU PRODUCTION OPTIMIZATION INC.

## Ashphaltene Case Study

### Well Background Information

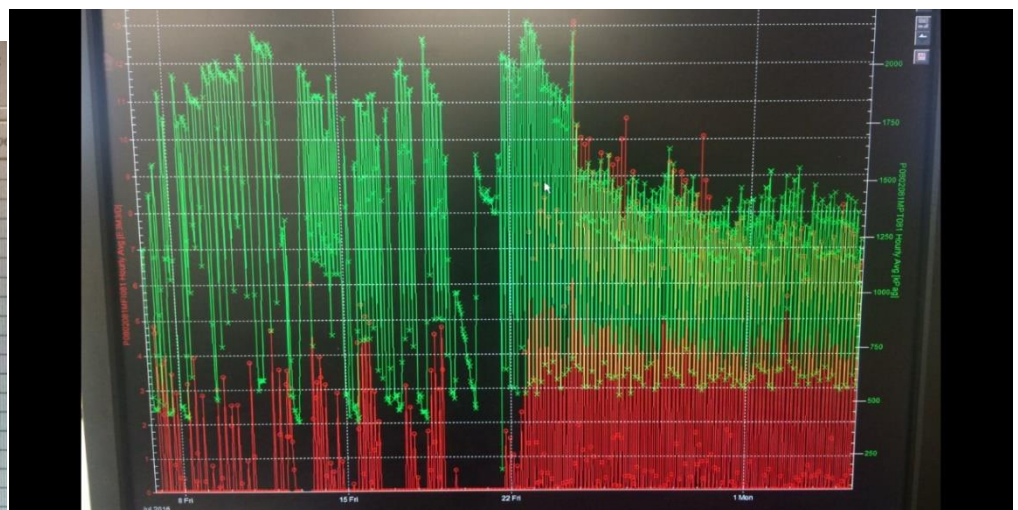
Operator was having issues with this free flowing gas well. It was on a timer but production wasn't where it should be. This well was on a conventional, continuous chemical injection program. They assumed it was loaded up, so dropped a soap stick and shut in for 24 hours. When they returned the following day, they heard the soap stick arrive almost immediately after start up. Upon opening the wellhead up they found the soap stick still intact with a large volume of ashphaltene and wax covering it. ReNuu was immediately called in and pumped 200 litres of micro-organisms and 10 litres of our micro-organism safe para-solvent down the tubing, a \$400 cost. The well was again shut in for 24 hours.

### Results

As the pictures indicate, the operator immediately seen increased gas production, as well as more consistent flow times. The operator made the comment: *"we always used to be at that well blowing it down, now we haven't touched it since you treated it"*.

*We feel our treatment of micro-organisms paid back in two ways: Increased production, as well as reduced operator time. We were not able to compare chemical costs, but feel we provide a very competitive product!*

Date For	Volume (m³)	Differential Pressure (kPa)	Static Pressure (kPa)	Temp
Aug-04-2016	1.931	15.04	566.14	
Aug-03-2016	1.969	14.99	580.78	
Aug-02-2016	1.912	13.55	656.48	
Aug-01-2016	1.912	14.39	567.31	
Jul-31-2016	1.844	13.27	576.79	
Jul-30-2016	2.026	16.09	583.86	
Jul-29-2016	2.188	18.58	585.45	
Jul-28-2016	2.187	17.58	647.63	
Jul-27-2016	2.083	17.20	576.48	
Jul-26-2016	2.365	22.05	581.03	
Jul-25-2016	2.516	24.44	580.44	
Jul-24-2016	2.684	28.17	588.86	
Jul-23-2016	2.071	16.30	585.35	
Jul-22-2016	1.645	13.29	557.94	
Jul-21-2016	0.368	8.04	555.29	
Jul-20-2016	0.00	0.00	1284.77	
Jul-19-2016	0.033	13.43	556.46	
Jul-18-2016	0.931	9.18	526.36	
Jul-17-2016	0.439	8.63	530.43	
Jul-16-2016	0.171	9.87	563.50	
Jul-15-2016	1.184	9.82	549.57	
Jul-14-2016	0.269	10.82	575.56	
Jul-13-2016	1.255	10.21	551.49	
Jul-12-2016	0.487	9.30	560.53	
Jul-11-2016	0.495	11.29	590.04	
Jul-10-2016	0.29844	10.43	545.54	
Jul-09-2016	0.49582	11.69	541.59	
Jul-08-2016	0.62598	10.12	542.77	
Jul-07-2016	0.3993	10.76	534.98	
Jul-06-2016	1.46186	9.72	534.47	
Jul-05-2016	1.34942	8.51	527.57	



ReNuu Production Optimization Inc.

Cell: 403-704-3029

Phone: 403-843-BUGS (2847)

Email: [office@ReNuu.net](mailto:office@ReNuu.net)

Website: [www.ReNuu.net](http://www.ReNuu.net)